

FOR SALE

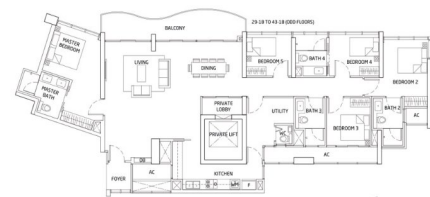
RESIDENTIAL - CONDOMINIUM 2,002SQFT (186SQM) / CALL FOR PRICE!

+65 9026 2322



5 - Bedroom with Private Lift

TYPE E1
186sqm | 2,002sqft



RESIDENTIAL - CONDOMINIUM DUNDEE ROAD, SINGAPORE 149457

- LISTING ID: SGLD56048011
- TENURE: LEASEHOLD 99
- TITLE: N/A
- SIZE BUILT-UP: 2,002SQFT (186SQM)
- SIZE LAND: 2.599AC (1.052HA)
- NO. OF FLOORS: 44
- FLOOR/LEVEL: N/A - HIGH FLOOR
- BED ROOMS: 5
- BATH ROOMS: 4
- MAIDS ROOMS: N/A
- PARKING SPACES: N/A
- LAYOUT TYPE: CORNER
- FACING: N/A
- VIEWING: OTHER
- SELLING PRICE: **CALL FOR PRICE!**
- COMPLETION YEAR: 2020
- CONDITION: ORIGINAL CONDITION
- FURNISHING: PARTIALLY FURNISHED
- LISTING DATE: MAY 20, 2020

QUEENS PEAK

Spacious 2,002sqft (186sqm), partially furnished, 5 bedroom, 4 bathroom Condominium for Sale. Completion in 2020, this high floor corner unit is in original condition. Others: Leasehold 99
This property is currently vacant and ready to move in. Located in Singapore's district D03 near Alexandra, Commonwealth in the area Central South (Central region).

INTERIOR FACILITIES

- Air-Conditioning
- Cable TV
- Balcony
- Private Lift

OTHER INTERIOR FEATURES

- Cooker Hob/Hood
- Intercom
- Dishwasher
- Oven / Microwave

EXTERIOR FACILITIES

- 24 Hours Security
- Function Room
- Covered Car Park
- Jacuzzi

VISIT THIS PROPERTY AT: <https://www.stellaproperties.com.sg/property/SGLD56048011>



STELLA CHIANG - HUTTONS ASIA PTE LTD

3 Bishan Place #05-01 CPF Bishan Building
D20, 579838, Singapore

+65 9026 2322
WhatsApp Me

stellachiang66@gmail.com

L3008899K
R007993Z

<https://www.stellaproperties.com.sg>



Scan QR Code

Huttons®
The Agency of Choice
Call for Viewing
+65-90262322